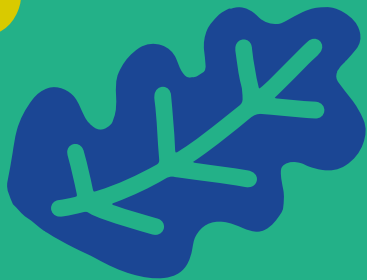




Welcome to Falfield

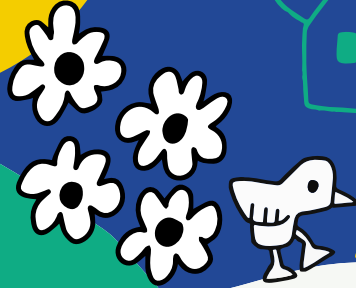
Map and guide by Billy Colours in collaboration with Local Community.



Linden
HOMES

Biù8
billycolours 

Welcome to Falfield



New Footpath

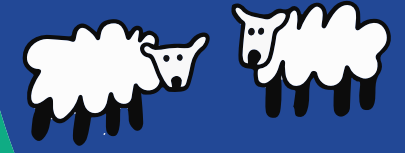
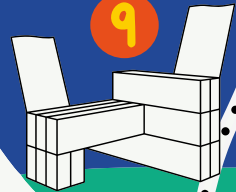
Moorslade Lane

Heneage Lane

A38

Sundayshill Lane

- 1 Village Hall
- 2 St. George's Church
- 3 The Huntsman Pub
- 4 Shop & Post Office
- 5 Falfield Grange
- 6 Community Orchard
- 7 Allotments
- 8 Playground & Basketball Court
- 9 Print Maker Benches
- 10 Scout Hall
- 11 War Memorial
- 12 Old Water Mill
- 13 Heneage Farm



Sundayshill Lane

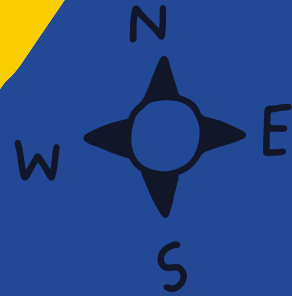
Mill Lane

Church Ave

A38

Post Office

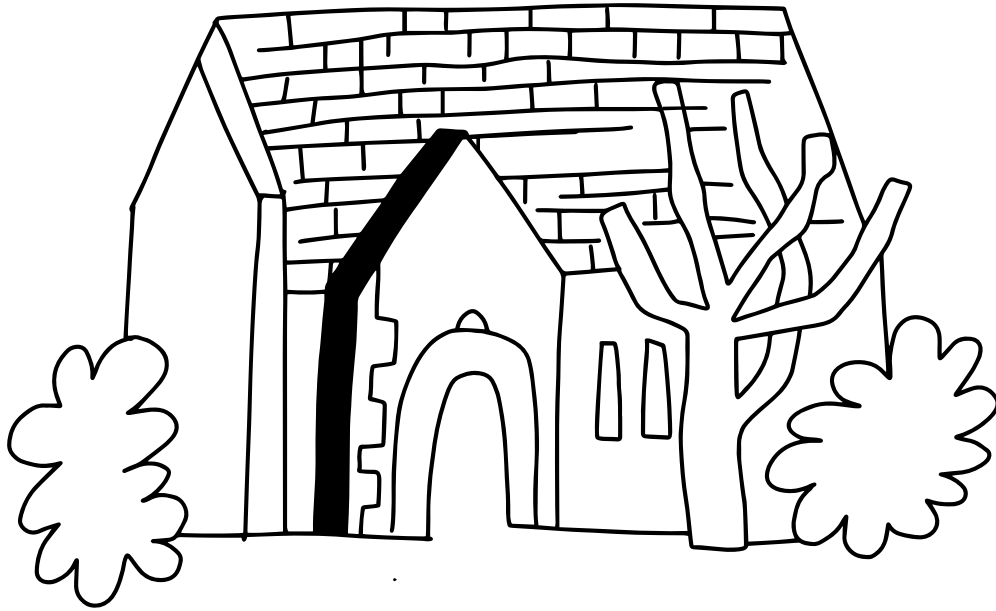
A38



LANDMARKS.



Welcome to
Falfield



1 VILLAGE HALL

A38, Falfield, GL12 8DH

The Community hub. Here you can attend various events and meetings organised by the Village Hall Committee. Including coffee mornings, Parish council meetings and Brownies!

2 ST GEORGE'S CHURCH

Sundayshill Lane, Falfield, GL12 8DH

The Anglican Parish Church of St George Church is open daily for quiet prayer and reflection. At St George Church there are 3 services each month. Weddings, Baptisms and Funerals can also take place. Check the Falfield community website for more information.

LANDMARKS.



Welcome to
Falfield



3 THE HUNTSMAN PUB

Bristol Rd, Falfield, GL12 8DF

Traditional family run pub for the people of Falfield and surrounding towns and villages.

www.huntsmanfalfield.co.uk

4 VILLAGE SHOP + POST OFFICE

Bristol Rd, Falfield, GL12 8DF

Falfield Village Stores and Post Office.

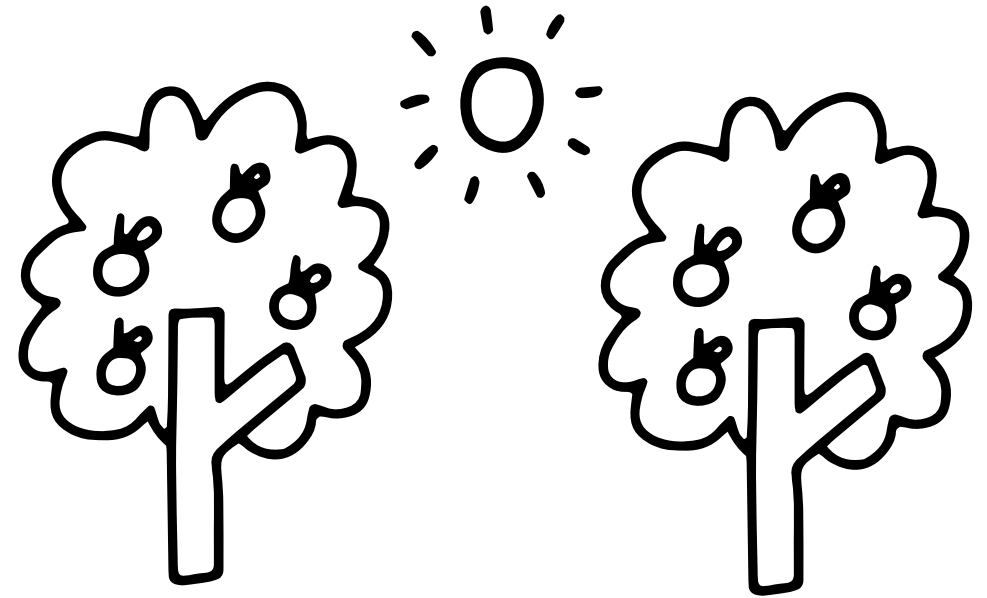
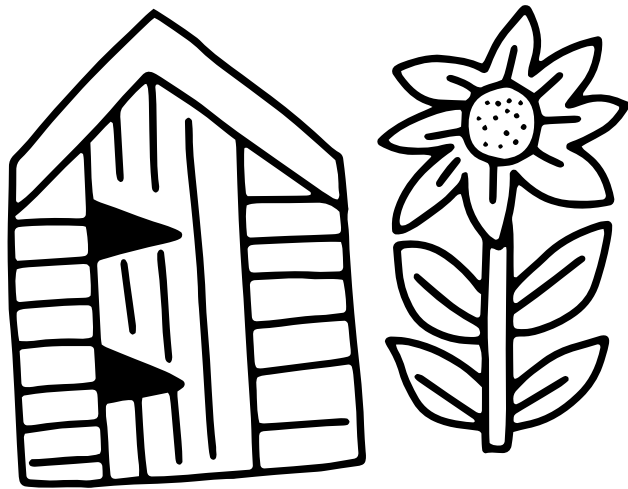
Open 7 days a week.

Check Facebook page for up to date information and opening times.

COMMUNITY SPACES.



Welcome to
Falfield



6 COMMUNITY
ALLOTMENTS

Jenkinson Way, Falfield GL12 8EG

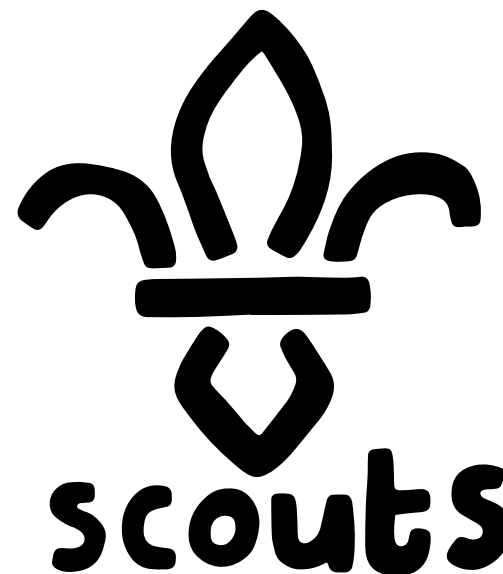
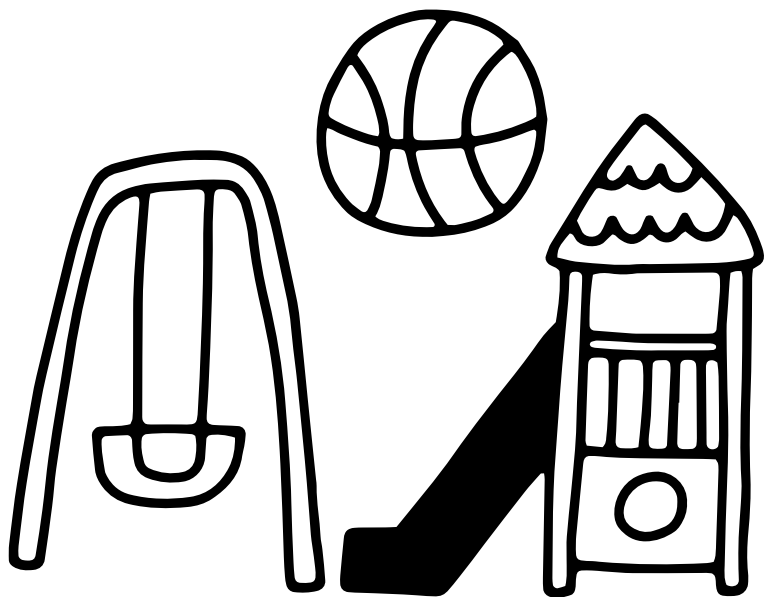
7 COMMUNITY
ORCHARD

Jenkinson Way, Falfield GL12 8EG

COMMUNITY SPACES.



Welcome to
Falfield



8 BASKETBALL
COURT
+ PLAYGROUND

Jenkinson Way, Falfield GL12 8EG

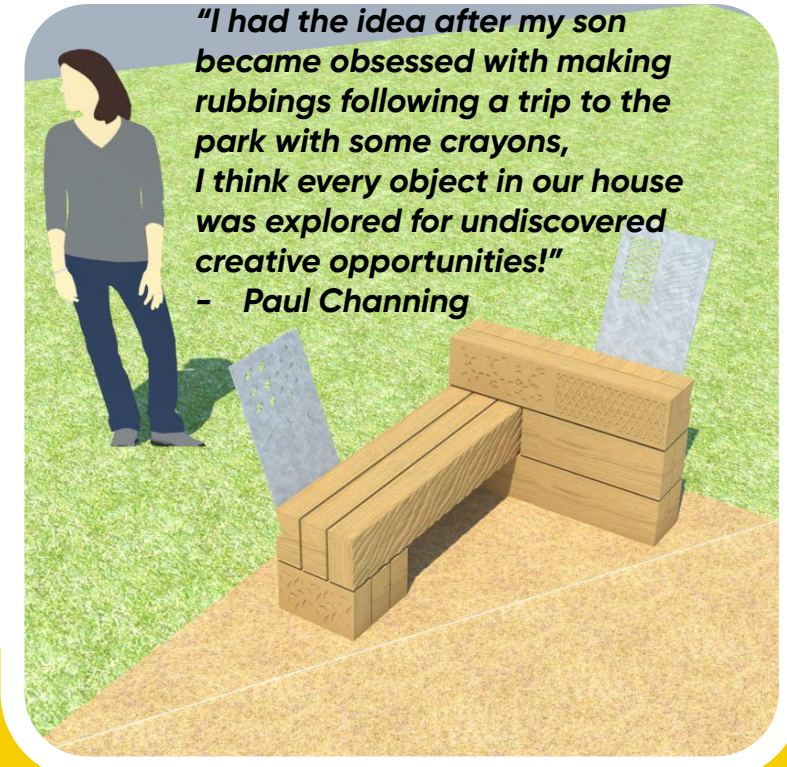
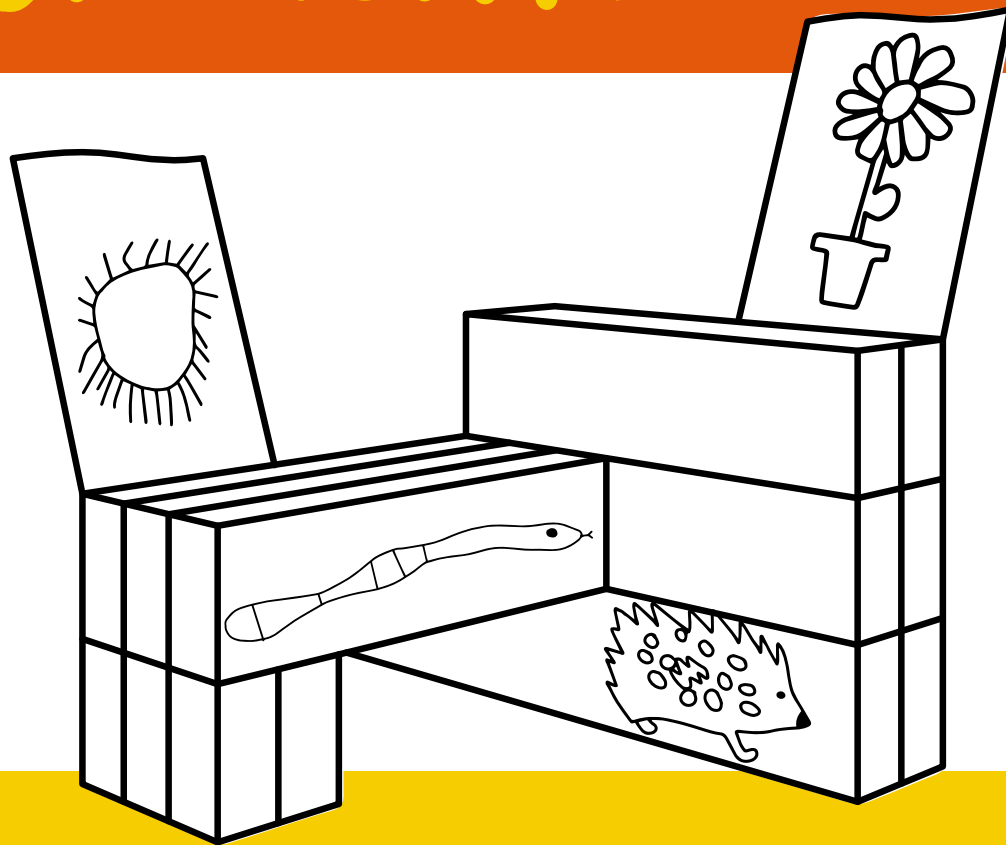
9 SCOUT
HALL

Eastley Close, Falfield GL12 8BZ

COMMUNITY SPACES.



Welcome to
Falfield



"I had the idea after my son became obsessed with making rubbings following a trip to the park with some crayons, I think every object in our house was explored for undiscovered creative opportunities!"
- Paul Channing

10 PRINT MAKER BENCHES BY PAUL CHANNING.

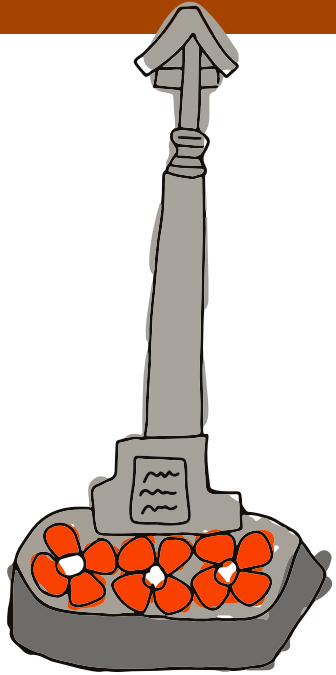
Jenkinson Way, Falfield GL12 8EG

Print Makers for Falfield are seats which the public can use to make art. In the artistic tradition of brass rubbing anyone can take a piece of paper and crayon and create an instant artwork. The seats are covered in imagery and by holding a piece of paper against the seat and rubbing the crayon, you can create markings to form a unique piece of art. The patterns, textures, drawings and text are sourced from the community referencing many aspects of the village, from its history and architecture to its flora, fauna and people!

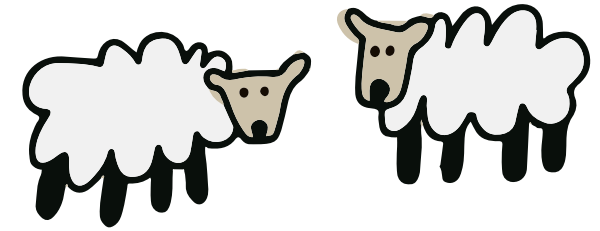
HISTORIC SITES.



Welcome to
Falfield



Heneage Farm



11

WAR MEMORIAL

Sundayshill Ln, GL12 8DQ

The war memorial was erected on the village green in 1920. By 1964, the memorial was moved to its current position outside St George's church.

12

OLD WATER MILL

Mill Lane, GL12 8BW

Grade 11 listed 18th century Corn Mill converted to a residential home.

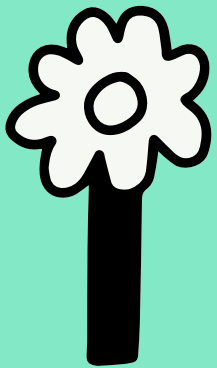
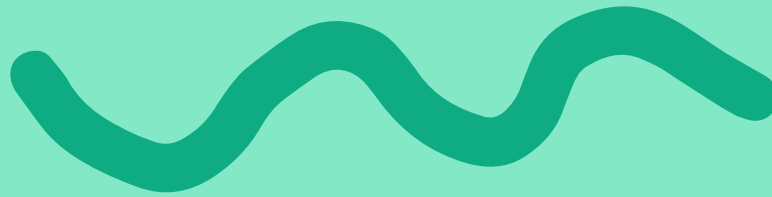
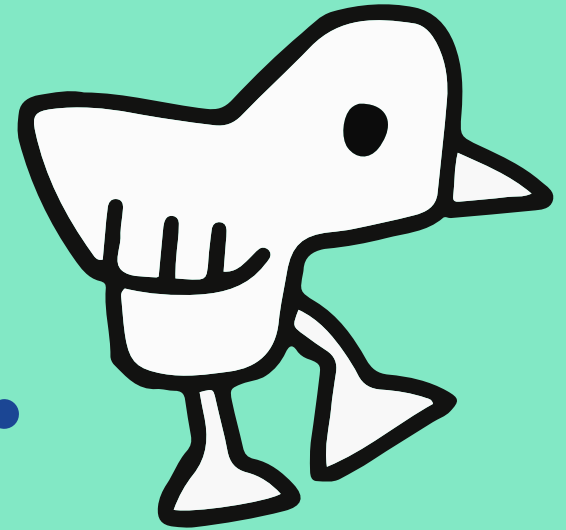
13

HENEAGE FARM

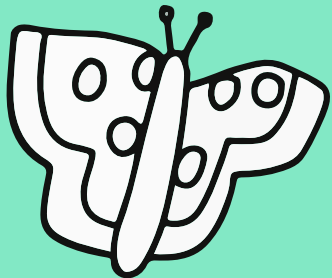
Jenkinson Way, GL12 8EG

Old farm site that is now home to the new Falfield Grange housing development.

WILDLIFE IN FALFIELD.



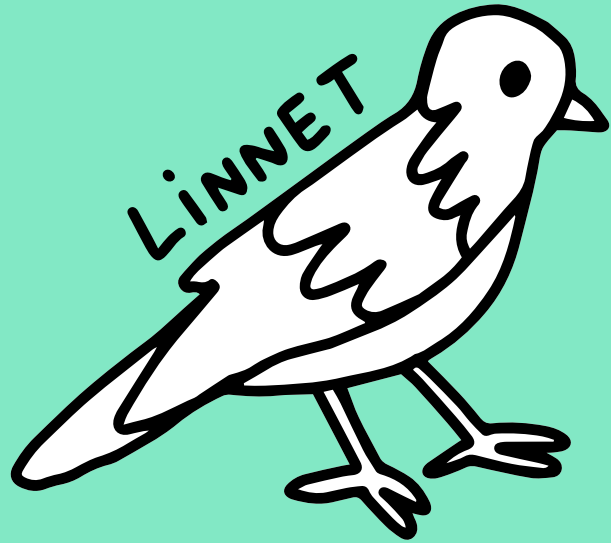
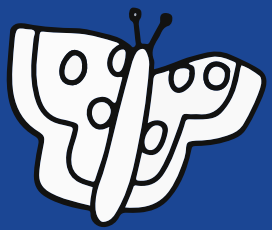
Did you know about all the wonderful wildlife that inhabits Falfield?



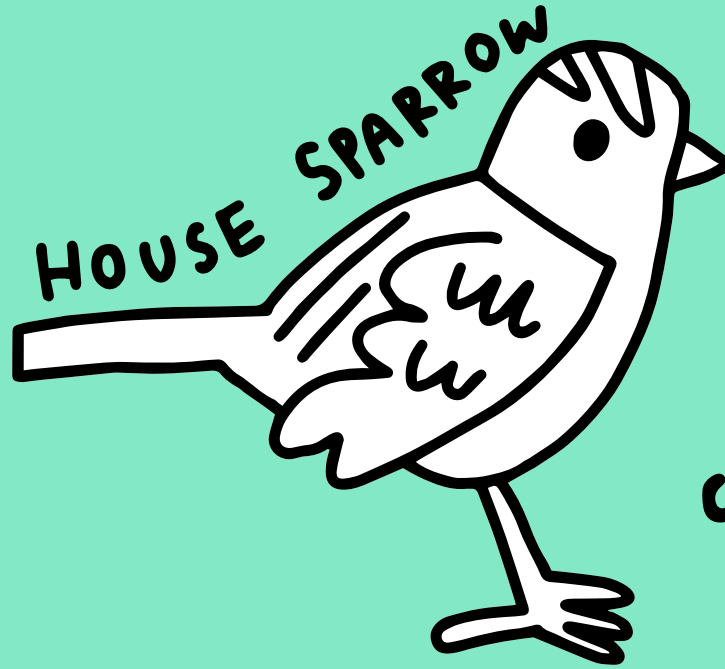
Can you spot any of these animals and birds...?



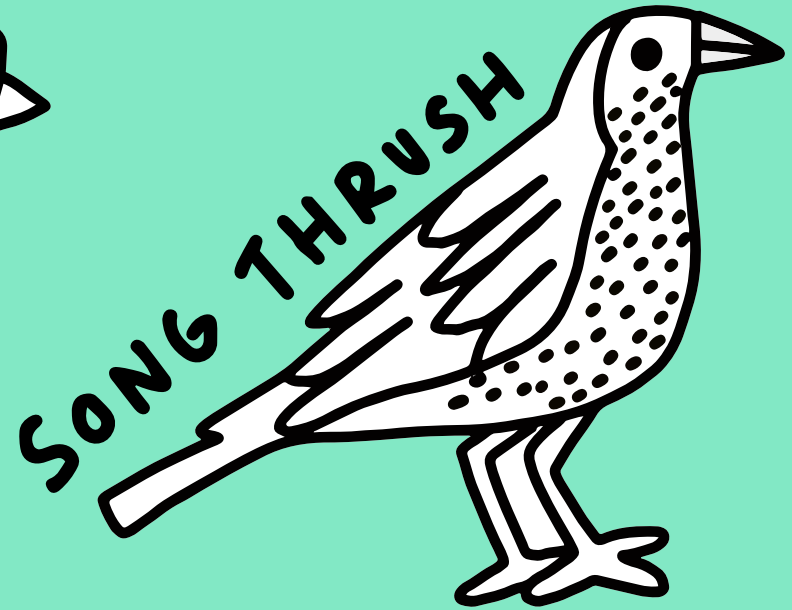
WILDLIFE IN FALFIELD.



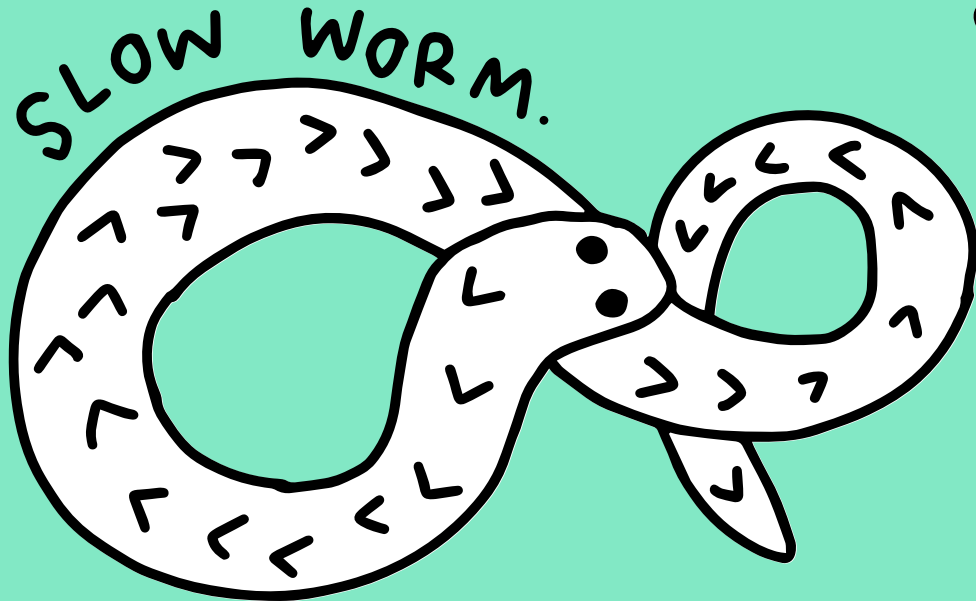
LINNET



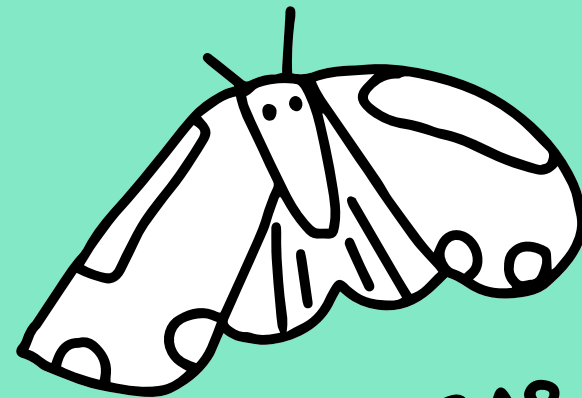
HOUSE SPARROW



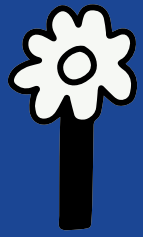
SONG THRUSH



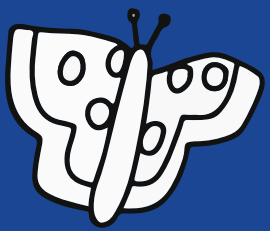
SLOW WORM.



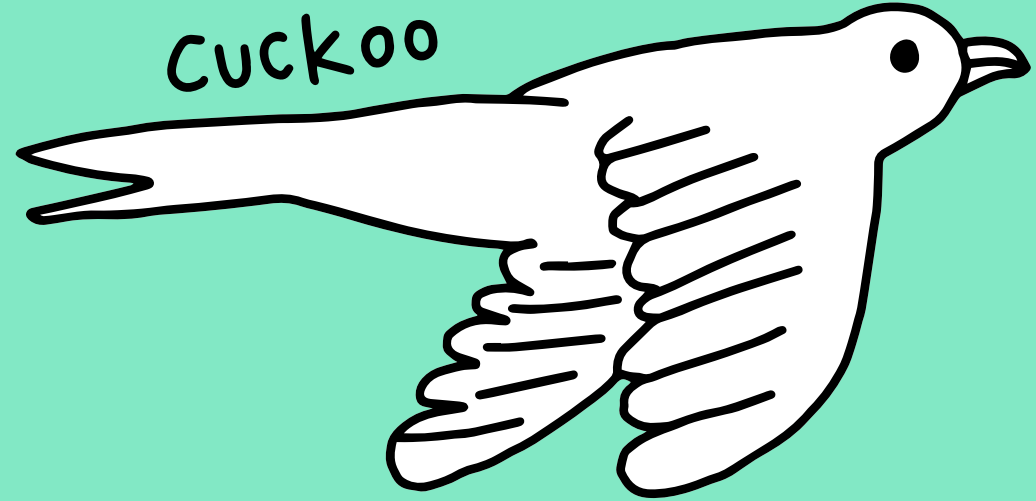
CINNABAR



WILDLIFE IN FALFIELD.



SKYLARK



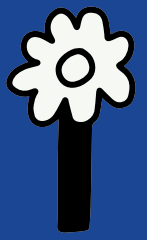
CUCKOO



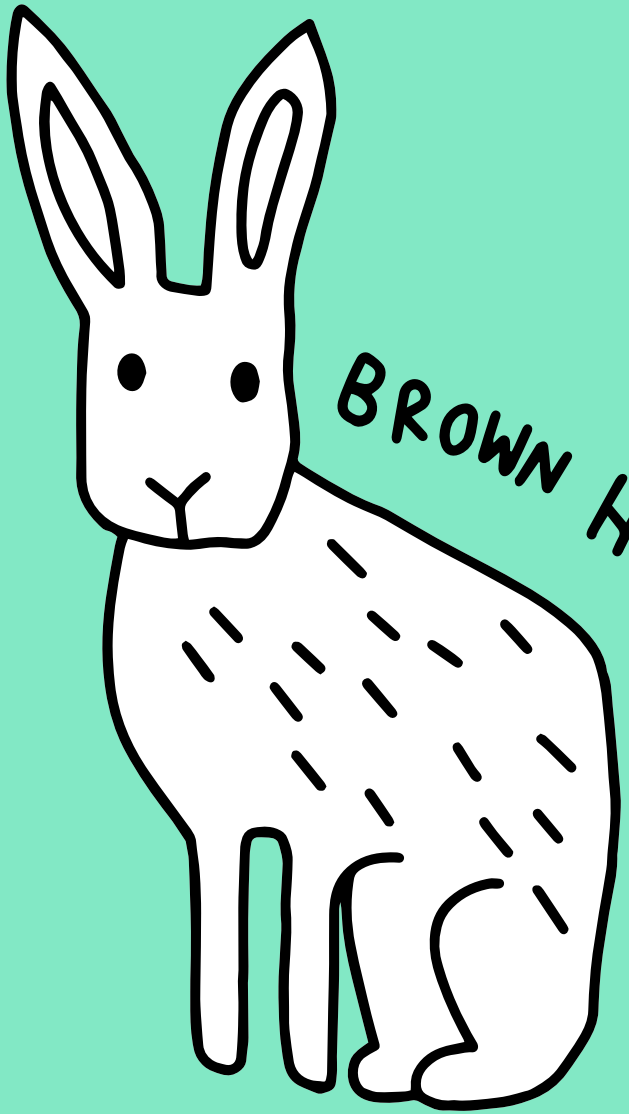
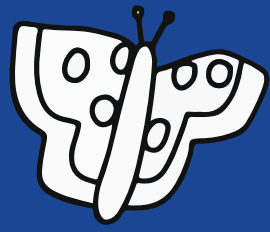
HORSE SHOE BAT



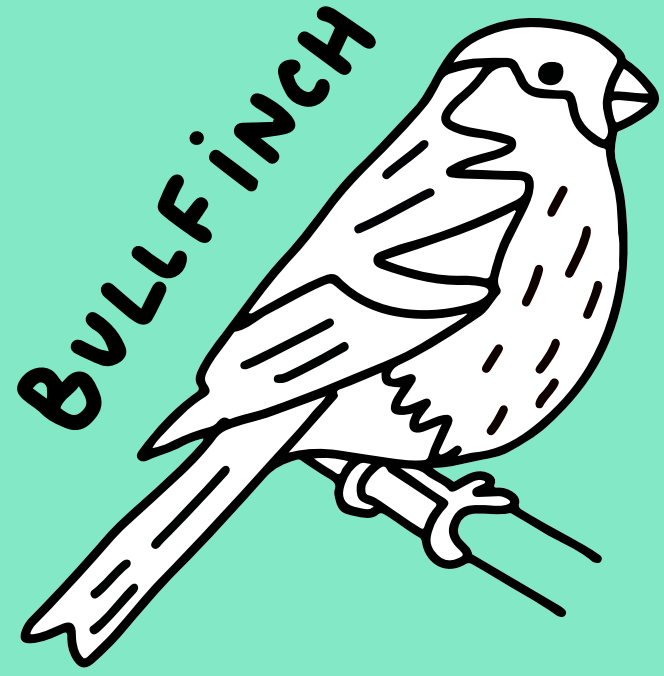
YELLOW
HAMMER



WILDLIFE IN FALFIELD.



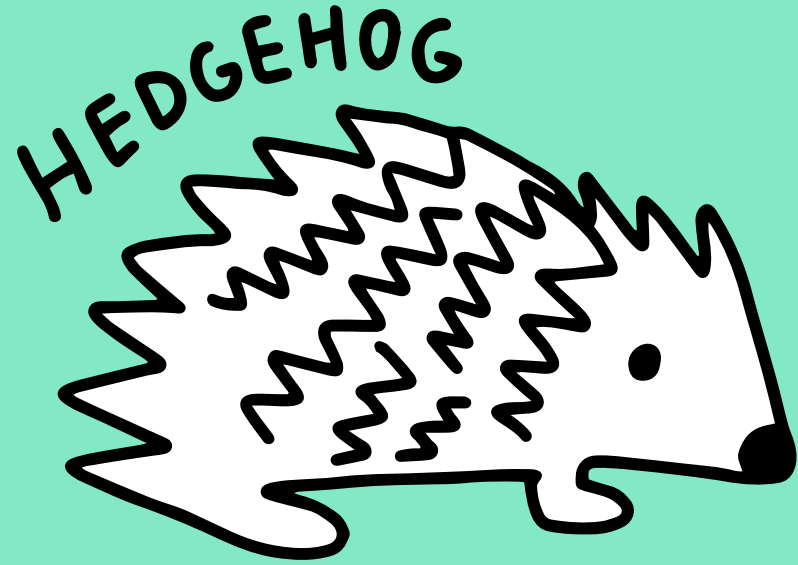
BROWN HARE



BULLFINCH



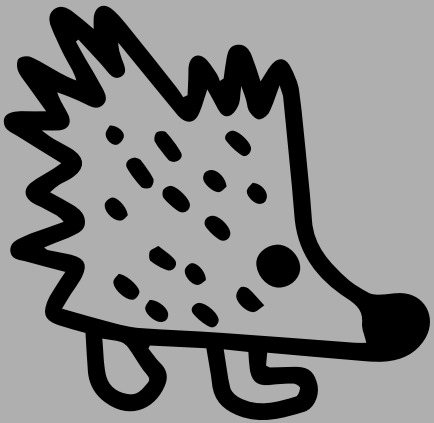
STARLING



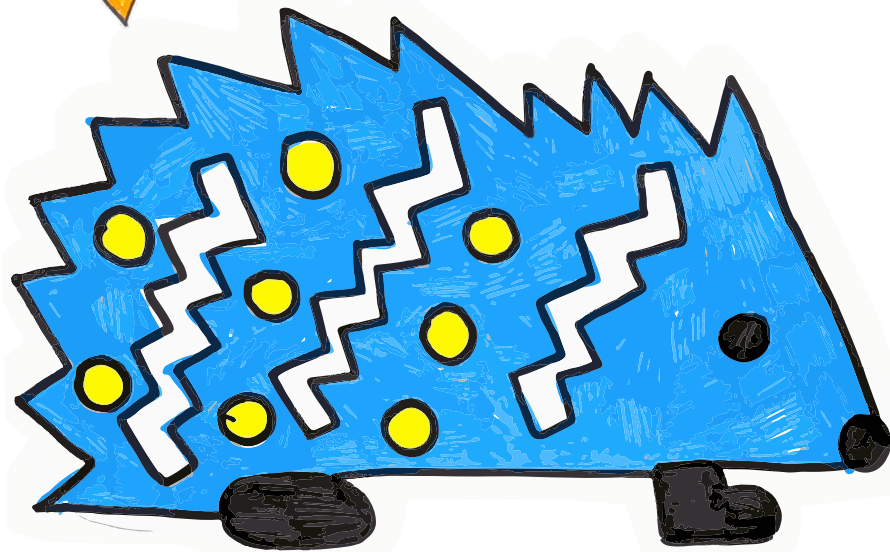
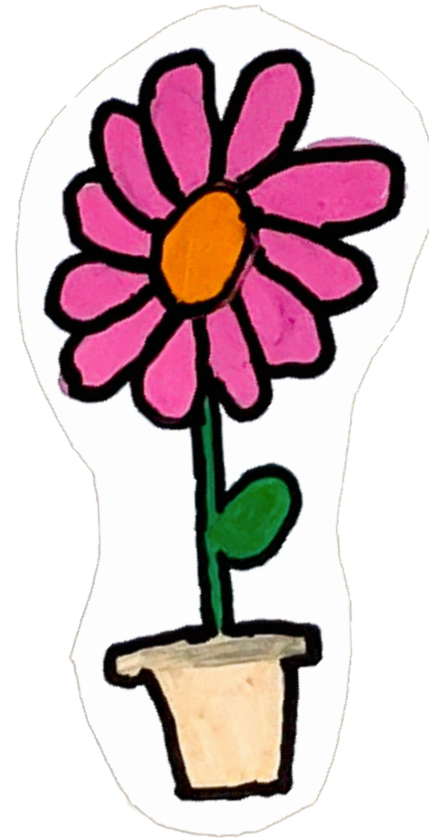
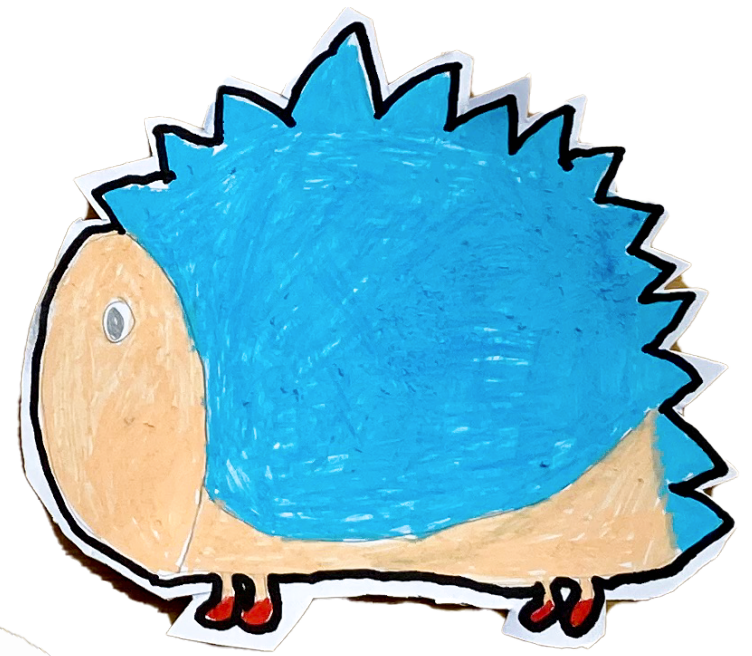
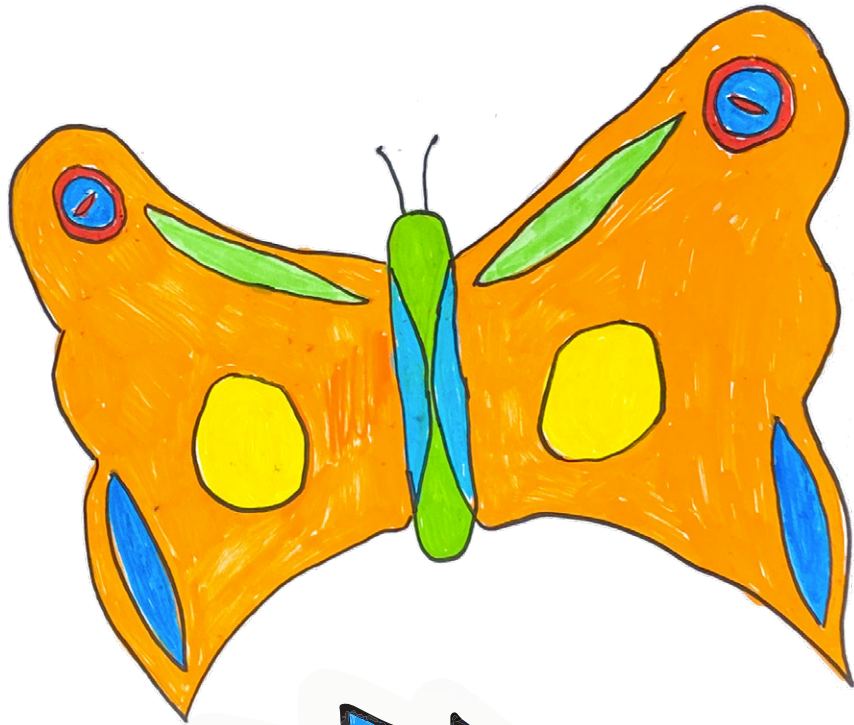
HEDGEHOG



Artist Billy Colours,
worked with Falfield
Beavers to make
colourful animal
artworks celebrating
the local Wildlife!

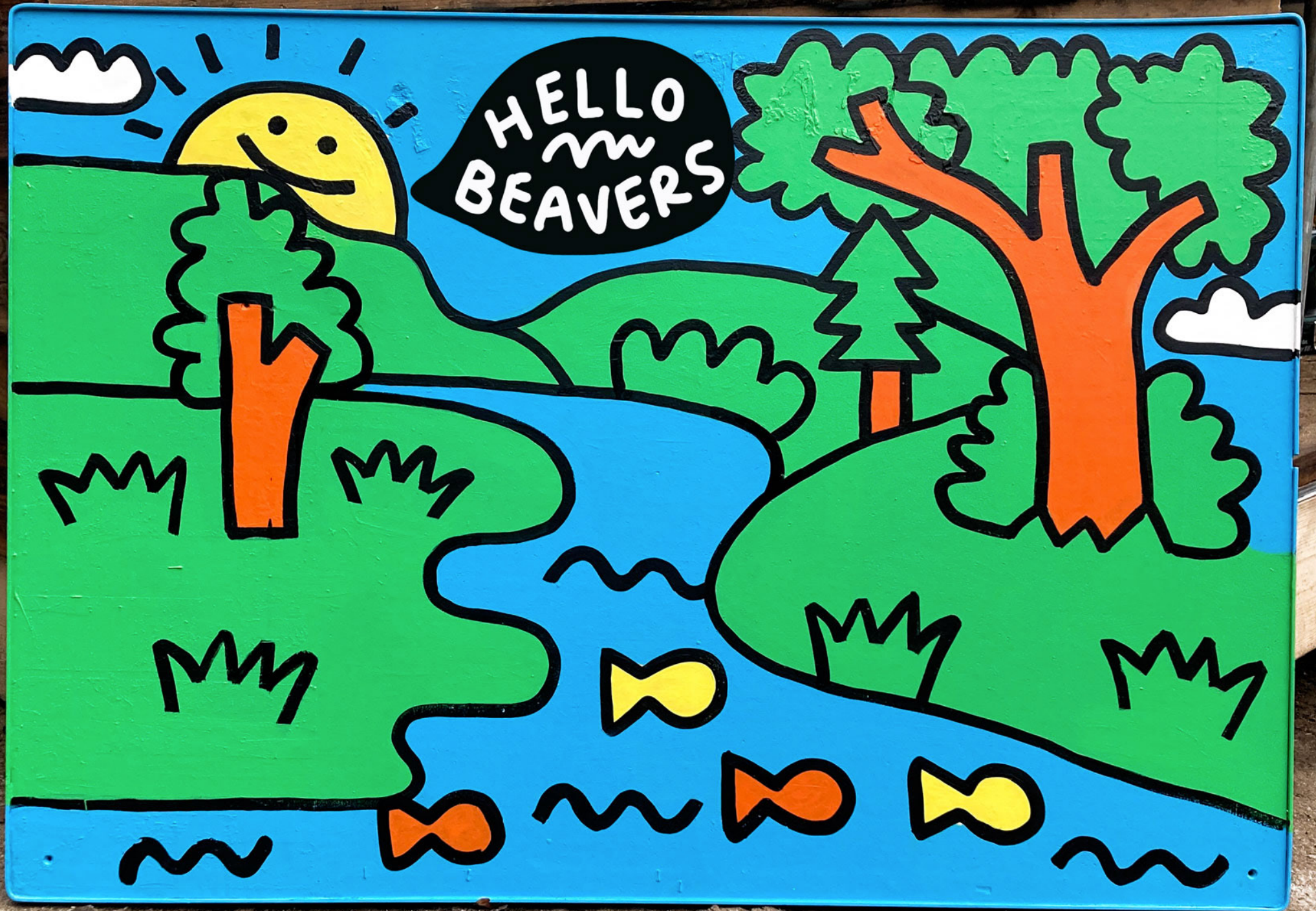


Some of the creations!



Then Billy and the Beavers painted a new board for their Beaver hut!

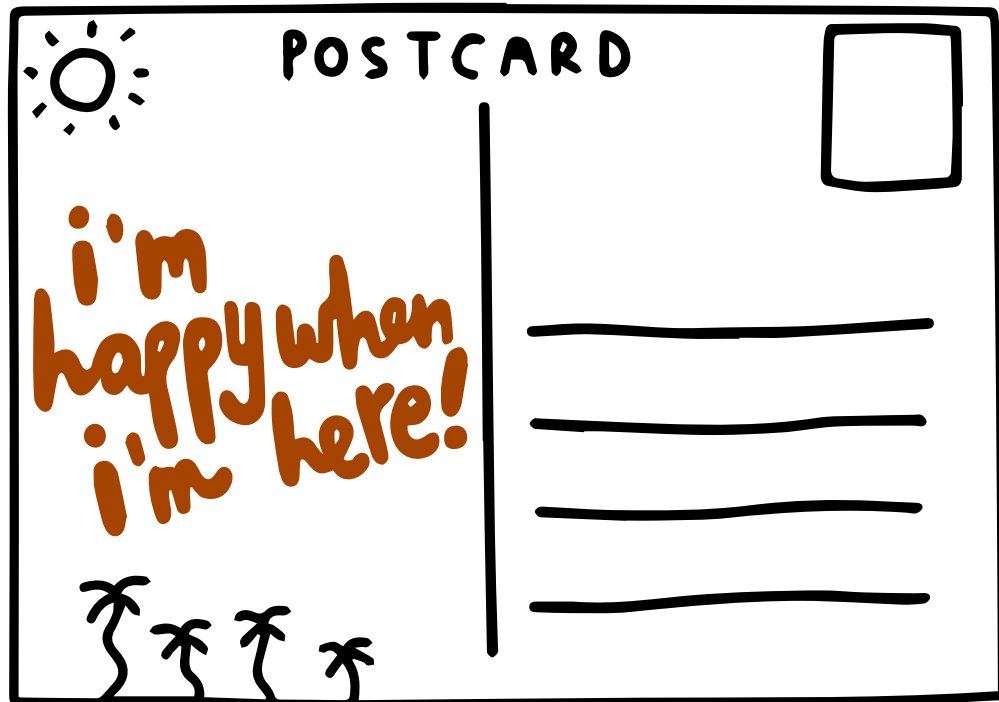




HELLO
BEAVERS

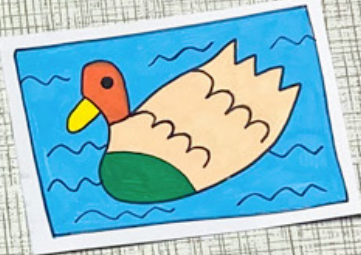
FALFIELD LANDSCAPES





Billy Colours also worked with Falfield Brownies to make postcards from Falfield showing their favourite landscapes!

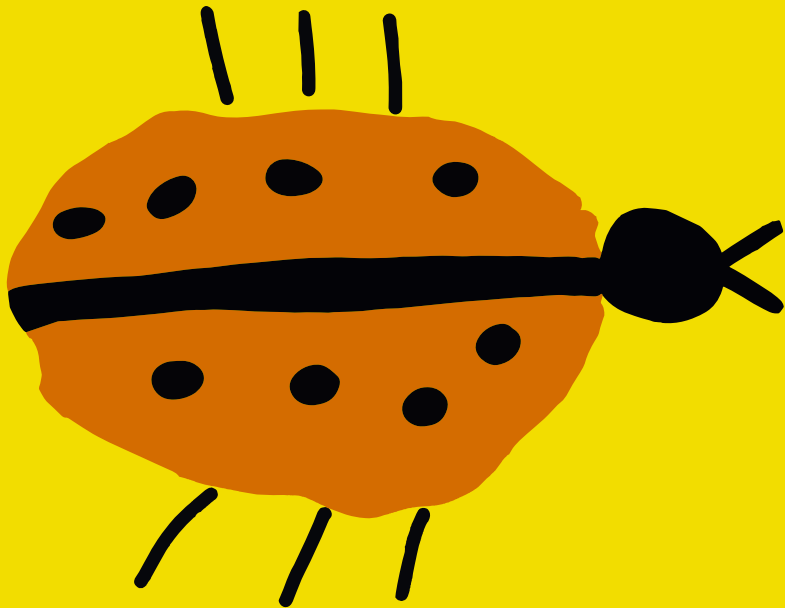






Think of a happy place!

- **What's your favourite place in Falfield ?**
- **What are some of the things that make you happy about where you live?**





Join our community!

Useful community links.



Falfield Website

www.falfield.org.uk

Falfield Parish Council

www.falfieldparishcouncil.org

Falfield Village Hall

falfieldvh@gmail.com

Falfield Scouts

falfieldGSL@cesd.org.uk

Falfield Brownies

brownowl@1fsb.co.uk

THANK YOU!



This Welcome Pack was made by artist – Billy Colours.
You can see more from Billy at billycolours.com or @billycolours on social media.



Thank you to the Parish Council and James Carpenter, who runs the fantastic Falfield website (www.falfield.org) for his assistance and in depth knowledge about Falfield to inform this project.



Big thanks to the Falfield Beavers and Brownies for taking part in the art workshops and helping make this welcome pack with their wonderful artwork.



Thank you to Linden Homes for commissioning this art project.

Biú8
billycolours 🌈

Resources:

- Falfield.org.uk
- *Falfield Parish Biodiversity Plan*
- *'We grew up in Falfield'* by Ann Riddiford

Linden
HOMES